

Filtration Cycling Pump

Instruction Manual

SP Series

3. Circuit wiring should be carried out by qualified electricians. Ensure that the motor supporting rack must be grounded. The wire for ground mat should be copper conductor with a section area not less than 2.5mm^2 .
4. The product is designed for stationary services.

V. Warranty and service

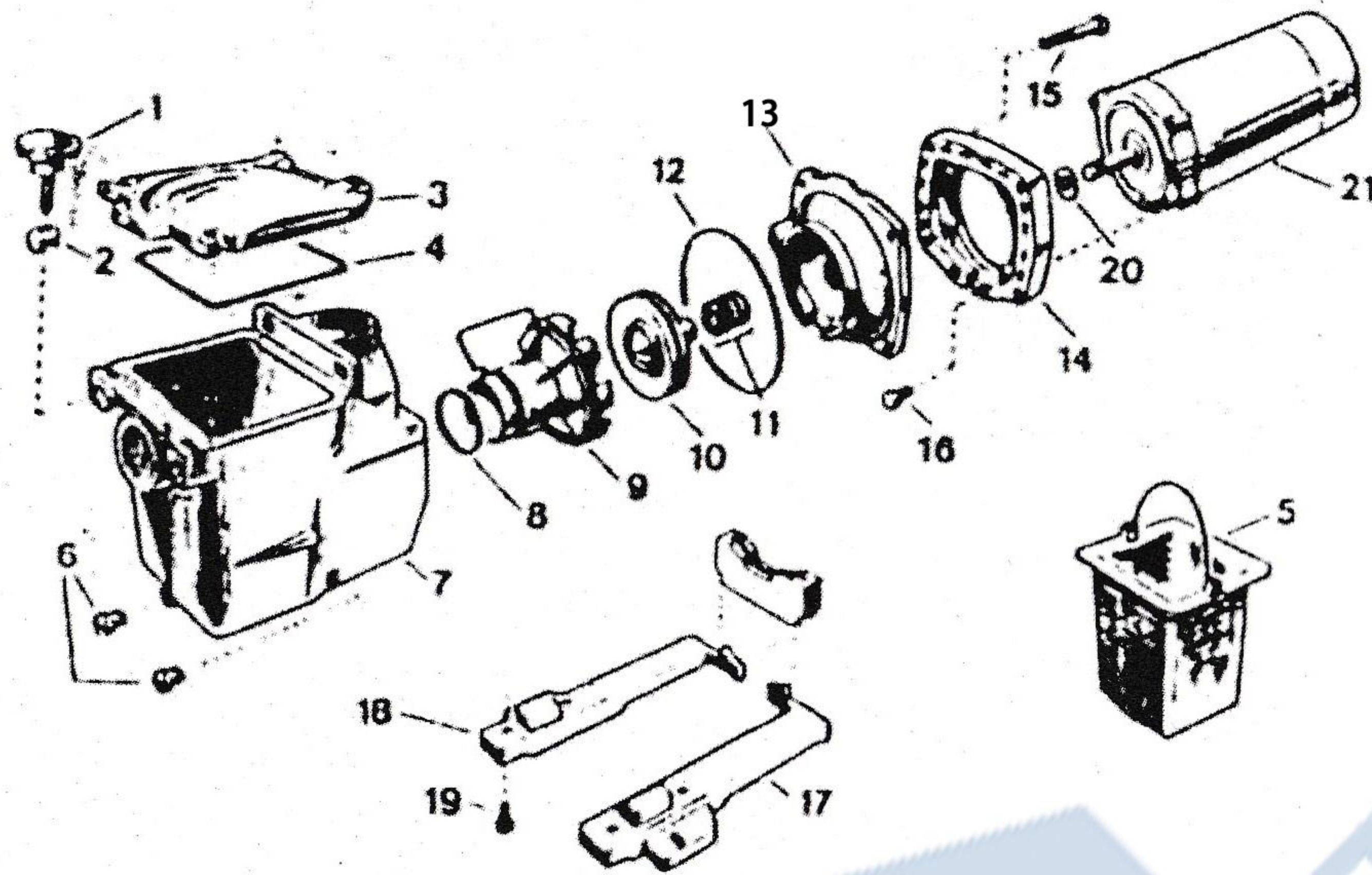
1. The Company promises that it will offer one-year warranty for pump (excluding normal abrasions).
2. In case any fault or damage occurs in the product caused by our product quality during the warranty period, the Company will be responsible for relevant repair or replacement after we have tested and validated the fault or damage.
3. If any fault or damage occurs in the product under one of the following conditions, the Company is willing to offer service, and break-even cost should be charged.
 - a. The product was improperly operated or mounted, or accident has happened to the product;
 - b. The product has been disassembled and repaired;
 - c. The model, serial number or data plate has been removed or destroyed.
 - d. The product's warranty period is overdue.

I. Installation and operating instruction

1. Water pump should be levelled and securely mounted outside pond and below normal water level.
2. The water inlet/outlet pipes connected to the water pump should be strictly airtight.
3. Connect the power cable according to the wiring diagram on the motor nameplate. A stationary power supply should be offered for each water pump, and the power supply must satisfy the voltage and frequency specified on the nameplate. The power supply must be equipped with leakage protection switch.
4. The motor must be properly grounded for fear of electrical shock.
5. Power on the 3-phase pump motor instantaneously for 0.5~1 second and validate that the motor rotation direction is consonance with the sign. And then fill the reservoir with water and start the motor
6. Before starting the water pump, screw off the reservoir cover and fill the reservoir with water. Screw down the reservoir cover, and start the motor.
7. To avoid breakage caused by freezing, water within pump body should be completely discharged before it is not in use in winter. Reservoir strainer should be periodically cleaned up so as to avoid clogging
8. After long-term service, leakage caused by abrasion may occur in the mechanical packing. Just repair or replace it.

II. Structure of the product

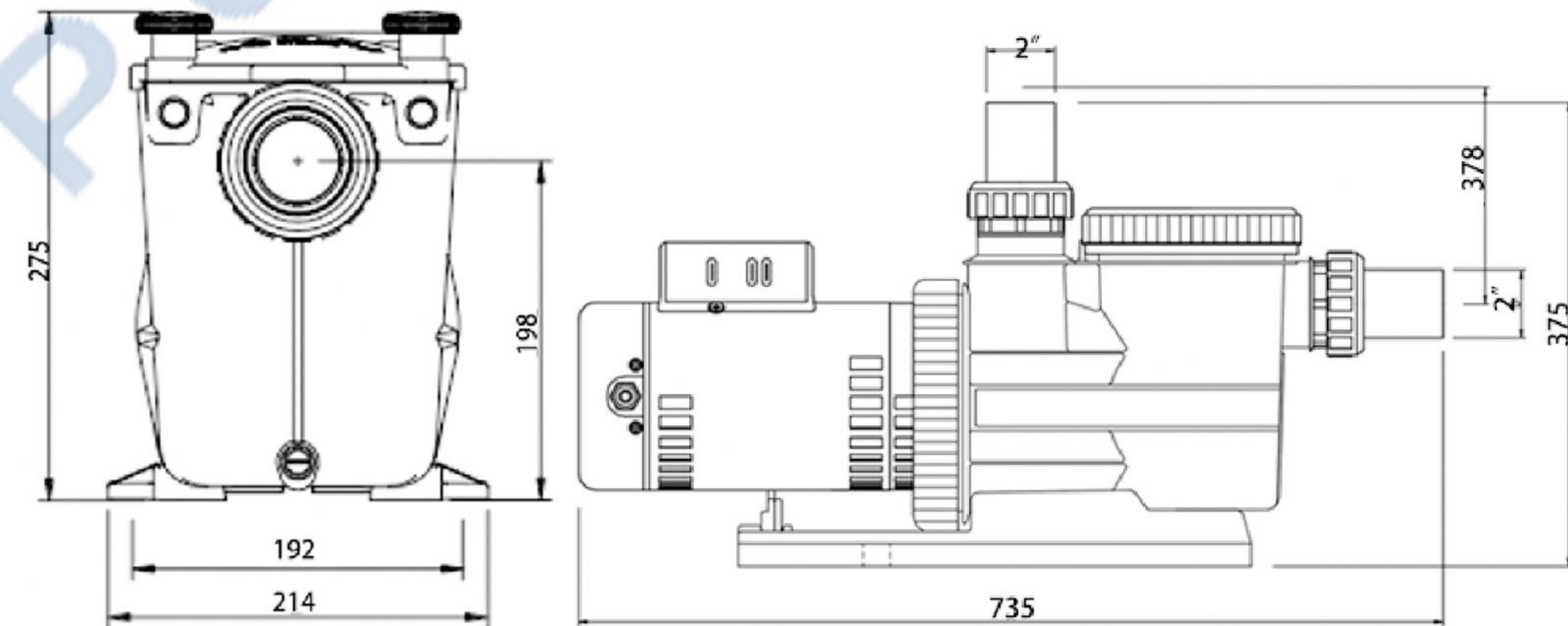
For disassembly, maintenance or ordering spare part, please refer to the serial numbers and designations as shown in the following figure.



- | | | |
|-----------------------------------|--------------------------------|----------------------------------|
| 1. Finger-tightening screw | 9. Pump front cover | 16. Union screw, motor |
| 2. Movable nut | 10. Pump impeller | 17. Bearer, right |
| 3. Bucket cover | 11. Mechanical packing | 18. Bearer, left |
| 4. H-shape rubber ring for bucket | 12. Seal ring, pump rear cover | 19. Bearer screw |
| 5. Hair strainer | 13. Pump rear cover | 20. Watertight ring, motor shaft |
| 6. Discharge plug | 14. Coupling tray | 21. Motor |
| 7. Pump body | 15. Union screw, pump body | |
| 8. Seal ring, pump front cover | | |

III. Dimensions and parameters

Models	Power	Length A (mm)	Width B (mm)	Height C (mm)	Water inlet/outlet diameter	Number of phases
SP1005	1.0HP	600	219	276	2"	single
SP1503	1.5HP	610	219	276	2"	single
SP2001	2HP	610	219	276	2"	single
SP3004	3.0HP	610	219	276	2"	single
SPT2006	2.0HP	645	219	276	2"	three
SPT3002	3.0HP	660	219	276	2"	three



IV. Precautions

1. Do not start the motor in case of no water in the pump.
2. Use suitable power supply according to the content in the motor nameplate, and properly connect phase line, neutral line and ground wire. Use safe and acceptable leakage protection switch. Periodically check if leakage protection switch is normal before operation